



# Stories we tell

---

## CREATIVE WRITING TRAINING COURSE

---

February 27 - March 12 2017 - Bernay en Ponthieu, France

21 participants from France, Hungary, Italy, Macedonia, Portugal, Romania and Turkey

---

### SUMMARY

---

PROJECT	2
TRAINERS	4
PREPARATION	5
LOCATION	6
TRANSPORT	8
TRAVEL REIMBURSEMENT	9
CHECKLIST	10
CONTACTS	11





# Stories we tell

---

## PROJECT DESCRIPTION

---

*Nomadways is an association dedicated to innovation in the performing and visual arts. Our projects enhance interdisciplinary, intergenerational and multicultural dialogue. Our activities combine art, education and social vocation. We conduct workshops fostering interaction between creatives, social actors and educators. More on [www.nomadways.eu](http://www.nomadways.eu)*

.....  
Stories We Tell aims will invite artists and youth workers from various corners of Europe to meet, exchange and develop educational tools using writing, local legends & myths as a source of inspiration and encouragement for young people, calling them to pay attention to the potential of their rural cultures, surroundings and communities.

For 14 days, 21 artists and youth workers will meet in Saint Valery sur Somme in Picardie, from 27 of February to 12 of March 2017. 7 partners and 21 participants from France, Hungary, Italy, Macedonia, Portugal, Romania and Turkey will share personal and professional experiences and analyze the influence of the storytelling and creative writing in the identity of remote local communities. Together, they will write and rewrite local legends, myths, historical tales, original stories, poems, letters, essays inspired by Picardy and their own home regions.

We want this project to engage both youth workers and European writers and researchers. They will come together on the development of promotion methods for rural areas and societies as in Somme's Bay. Our main objective is the development of pedagogical tools using local stories, creative writing and different cultures to educate young people about the beauty and potential of their territory, wishing to turn them into active actors of their society.





# Stories we tell

---

## TRAINER

---

### EVELINA TAUNYTE

Evelina Taunyte (aka candycactus) is life-long-learning educator since 2004. Born in Lithuania, Evelina studied Social Education in Germany. After her studies she worked several years with youngsters from Cologne suburbs. This experience was the best school for the future as a a trainer - these youngsters would not stay in the room if they thought you were talking too long. As a digital nomad with interest in minorities Evelina lived an adventurous life moving during 7 years by bicycle from one country to another and working as a trainer and development worker in various projects in the Caucasus, Middle East and Turkey. Besides of being a trainer Evelina is an art practitioner dedicated to music, writing and photography. Currently she lives between Berlin and Basque country.



### ANNE MERLIN

Anne is a nomad designer. She creates and animates trainings since 2008. Born in France, Anne studied art and interaction design there. She lived in Greece, Brazil, Seychelles, Portugal and now travels all year round, working from anywhere. She is an idea machine. Her curiosity led her to teach in the Himalayas, hitchhike on boats along the Amazon and camp through the Sahara. She built a digital garden for a museum in Seychelles, drew posters for an art center in Senegal, sewed a chinese dragon body to a cardboard donkey head in Turkey. She is currently coordinating various art projects with cultural, educative and social dimensions in France, Turkey and Egypt.





# Stories we tell

---

## PREPARATION - TO DO BEFORE COMING

---

To prepare activities that best fit your needs and personal objectives, we are asking you to work on a few tasks before coming to the training. When your homework is done, please share the results with us! Therefore, send us a short description of the following elements at [miguel@nomadways.eu](mailto:miguel@nomadways.eu) BEFORE MONDAY THE 1ST OF FEBRUARY 2017!

---

### TASKS DESCRIPTION

---

#### - Bring a book from your country

Be ready to tell us about this book (study, fiction, fairytale, ...) from your country that shows interesting views on rurality. It can be anything that will help the group think about rural spaces and get inspired on how to write about them!

#### - Bring an image from your country

Choose a visual artwork illustrating the perception of rurality in your community, and bring a printed copy with you to show to the other participants. We are going to use them!

#### - Bring a movie from your country

Pick a film about rurality, from your country if possible, with english subtitles and take it with you to the training :)

#### - Propose a workshop for the others

You're a writer? An illustrator? An activist? Amazing! Please propose a workshop that you would like to animate for the group to help them discover and explore your field of expertise! Write a short description of your idea and send it to us by email :)

#### - Prepare an energizer for the others

Whenever needed, to start our activities on an energetic note, we will play a short 5-10mn game to energize everybody, feel refreshed and ready to rock the day! These games will be animated by... you! So please prepare at least one :)





# Stories we tell

---

## LOCATION

---

*The training is taking place in France, near the small town of Saint Valery sur Somme. It is situated 200km North from Paris, on the coast, in Picardy region. You will be staying in a rural residence there, in two houses neighbouring each other.*

---

## BAIE DE SOMME

---

The training is taking place in Baie de Somme, a rural area in Northern France, in Picardy region, bordering the sea. The region has been an inspiration for Delacroix, Degas, Corot, Colette, Jules Verne and Victor Hugo and is a fertile ground for creativity! Find out more on [www.visit-somme.com](http://www.visit-somme.com). Remember that the currency in France is EURO and changing money is difficult in rural areas.

---

## YOUR HOMES

---

You will be staying in three Bed & Breakfast houses neighbouring each other. See more here: [www.gite-spa-baie-de-somme.com](http://www.gite-spa-baie-de-somme.com). Each of you will share a room with one or two other participants. Each room has its private bathroom. Each house has wifi internet access. There is a kitchen, a dining room and a garden in each house. All meals will be prepared by a cook and served in the houses dining rooms. There are washing machines in each house. We kindly ask you to **bring your own toiletry and towel**.







# Stories we tell

## LOCATION





# Stories we tell

---

## TRANSPORT TO THE TRAINING

---

*The Nomad training is taking place near the beautiful village of Saint Valery sur Somme. To get there from Paris airports, you will need to master the french railway and bus system. Fear not, we are here to help you succeed!*

---

### FROM PARIS CHARLES DE GAULLE AIRPORT

---

From the airport, take the RER B -the line is blue- (the RER is a kind of regional train) in direction of Paris, and stop at the GARE DU NORD station!

---

### FROM PARIS ORLY AIRPORT

---

From Orly airport, take the Orlybus (a direct bus to Paris). At the last stop, take the RER B -the line is blue- (the RER is a kind of regional train) in direction of «Mitry Claye» or «Aéroport Charles de Gaulle» , and stop at the GARE DU NORD station!

---

### FROM PARIS BEAUVAIS AIRPORT

---

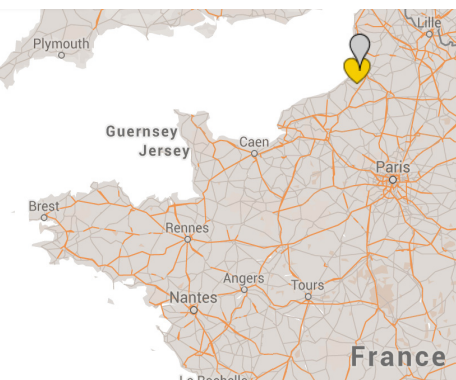
From Beauvais airport, take a direct bus to Paris Porte Maillot. When you arrive, take the metro line 1 -the line is yellow- in direction of «Chateau de Vincennes» and get off at «Châtelet», then change to line 4 -pruple- in direction of «Porte de Clignancourt», and stop at the GARE DU NORD station!

---

### FOR EVERYONE FROM GARE DU NORD

---

In Gare du Nord, follow the signs « Trains Grande Ligne » to go from the RER station to the railway station. Then, buy a return ticket for « Noyelles sur mer ». Take the next train. Get out at « Noyelles sur mer ». We will wait for you at the station :)







# Stories we tell

---

## TRAVEL REIMBURSEMENT

---

We will be able to reimburse your travel costs up to a maximum amount of:

- 180€ for participants from France
- 275€ for participants from Hungary, Italy, Macedonia, Portugal & Romania
- 360€ for participants from Turkey

We are also asking you a participation fee of 50 euros, deductible from your travel reimbursement. Food and accommodation are provided for free.

---

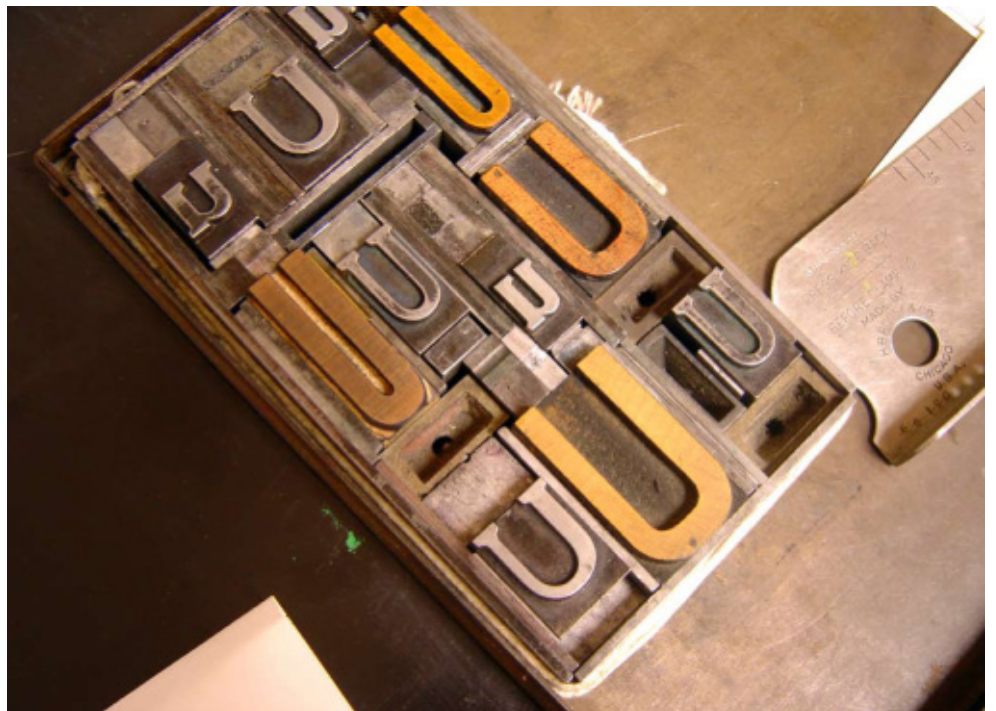
## REIMBURSEMENT PROCEDURE

---

Here is what you need to do to be reimbursed for your travel costs:

- 1 - send us your tickets invoice at miguel@nomadways.eu when booking your tickets
- 2 - during your trip, keep all your original tickets and boarding passes
- 3 - after the project, send us all your original tickets and boarding passes by post at:

**Nomadways**  
**1 passage Hédin**  
**80 230 Saint Valery sur Somme**  
**FRANCE**







# Stories we tell

## CHECKLIST

Please send what is needed at [miguel@nomadways.eu](mailto:miguel@nomadways.eu) BEFORE FEBRUARY 1ST!

### TO DO NOW

- send us your passport copy by email
- book your ticket, then send us the invoice and your online boarding passes by email  
/remember to arrive in Paris before 02/11 at 16.00  
/remember to leave from Paris after 22/11 at 15.00

### TO PREPARE BEFORE THE TRAINING

- pick 1 book from your country about rurality
- pick 1 image from your country about rurality
- pick 1 movie from your country about rurality (with english subtitles)
- prepare and shortly describe to us 1 workshop proposal for the others participants
- prepare at least 1 energizer for the others participants

### TO BRING WITH YOU FOR THE TRAINING

- 1 book about rurality from your country (in english if possible)
- 1 image about rurality from your country
- 1 movie about rurality from your country (with english subtitles)
- 1 workshop proposal for the others participants
- at least 1 energizer for the others participants
- a towel and your toiletry
- warm clothes
- drawing material if you have any!





# Stories we tell

---

## CONTACTS

---

### **Miguel Stichini - Logistics**

miguel@nomadways.eu

+336 50 13 57 50

---

### **Your house**

121 rue de Bellevue

80 120 Bernay en Ponthieu FRANCE

+336 24 82 57 07

---

### **NOMADWAYS office**

1 passage Hédin

80 230 Saint Valéry sur Somme FRANCE

+333 22 60 57 35



Co-funded by the  
Erasmus+ Programme  
of the European Union