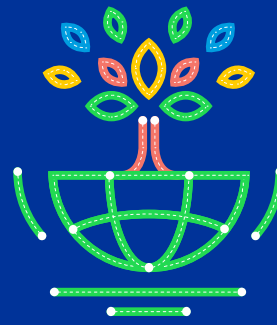


# SUSTAIN – MOBILITY

EPLM Conference

26 February – 1 March 2023

Germany



## Draft program - EPLM Conference: SUSTAIN-MOBILITY Learning how to be more sustainable in mobility projects

|                    | Sunday<br>February 26 <sup>th</sup> | Monday<br>February 27 <sup>th</sup>   | Tuesday<br>February 28 <sup>th</sup>   | Wednesday<br>March 1 <sup>st</sup>   |
|--------------------|-------------------------------------|---|--|--|
| Breakfast          | Arrivals                            | Breakfast   |  |  |
| Morning sessions   |                                     | <p>Welcome</p> <p>Widening the perspective:<br/>Understanding(s) of sustainability in relation to learning mobility</p> <p>EPLM (perspective) towards sustainable learning mobility</p> <p><i>Sustainability dilemmas</i></p> | <p>Sustainability and learning mobility through the golden pyramid</p> <p>Good practice workshops: What is sustainability nowadays in learning mobility?</p> <p><i>Sustainability dilemmas</i></p> | <p>How to fill in the gaps: What is needed in the future?</p> <p>EPLM and the future of sustainability and/in/with learning mobility</p> <p>Commitments for the future from the golden pyramid</p> |
| Lunch              |                                     | Lunch   |  |  |
| Afternoon sessions |                                     | <p>Sustainability and learning mobility as a systemic challenge and opportunity</p> <p>Mapping and (re)connecting stakeholders, organisations, and initiatives</p> <p><i>Sustainability dilemmas</i></p>                      | <p>The Fair of Good Practice</p> <p>Common reflection:<br/>What are the highlights?<br/>What is (still) missing?</p> <p><i>Sustainability dilemmas</i></p>   | Departures   |
| Dinner             |                                     |   |  |  |
| Evening programme  | Informal get together               | Sustainable exploration of the venue  | Sustainable food evening: celebrating the community  |  |